
58655m²

(2019 1)

2021 6

5.1

1

1.1

1.2

1

2

3

1.3

)

4 (2017 6 27)

5

83 2019 11 29

6 2020 1

1.4.2

1 [2017]49

2 2017 6 21

3 [2016]31

4 42

5

[2014]126

6 2017 8

7

[2020]4

8

[2019]71

1.4.3

1

GB 36600-2018

2

HJ 25.1-2019

3 GB/T 50145-2007

4

2014 78

5 2017

72

1.4.4

1 2002

2 2016-2030 2018 4

3

4

1.5

2

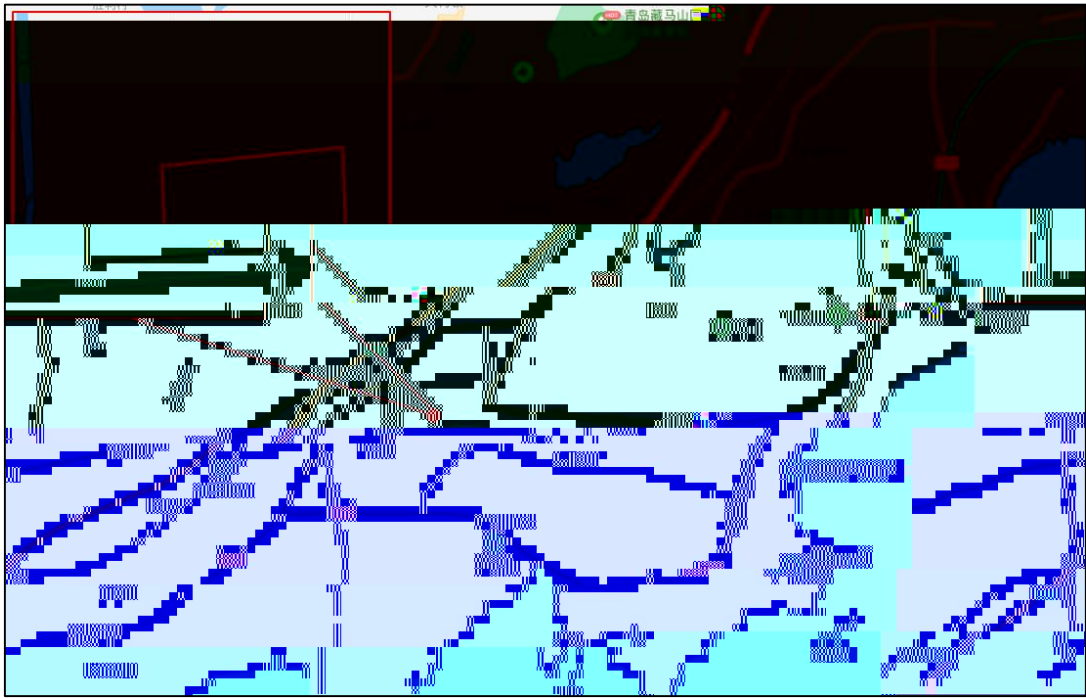
1.6

2-2



1-2

2.1



2-1

2.2

2.2.1

						35	35
36	08	119	30	120	11		
						79.25	62.36
		2096				5000	
	282	83		42			23

200d

5.4m/s

8

71d

1

12.5

12.9

9.4

11.3

4

11.5

23.9 8

25.5

14.3

1.5

26.3

-15.5 1958

1 16

35 1968 8 1 0

4128.6

12

3781

15 ,0 \$Y 3306

724.9

102.6

NE

2.2.5

11

34km

83.2 km²

2.2.6

1

2.2.7

1

	2018	3517.07	
	9.8%	73.7	3.81%
	1578.2	9.12%	1865.17
	10.39%	2.10 44.87 53.03	
	435.2	19.4%	262.7
	7.8%	217.9	10.6 %
80.4	2.3 %	41.0	14.9%
9.0	15.7%		



3			
2018		4193	16.5%
	4126.5	17.3%	
9.5%		246.7	2.06%
	438.3	2.33%	

2018			14100.3		18.2%	
2627.1		2.8%			15	
				118.7		
	20.8		14.4	,	6.4	
		220.5		29		
2018			2530			
267.8		14.0%	22.3%	Ê	22	S
	6		16	A	23	
4A	9	3A	6	2A	8	2018
38				3		
	35					
2						

65%

0.50~5.90m, 2.73m, 13.98~25.39m, 1.00~9
50m

(GB/T 50218-2014)

V

65k~75%) 5. 36~22.73m

250~15.00m

- 80%~90%

5.00~12.50m 8.56m 7.37~15.89m

10.00~15.00m

Rc=50.8~76.5MPa ~

~

(GB/T

50218- 2014)

I~II

2.3.2

2.50~3.20m

9.04~11.87m

2.0m

7~9

3~6

2.4

58655m²

2-1


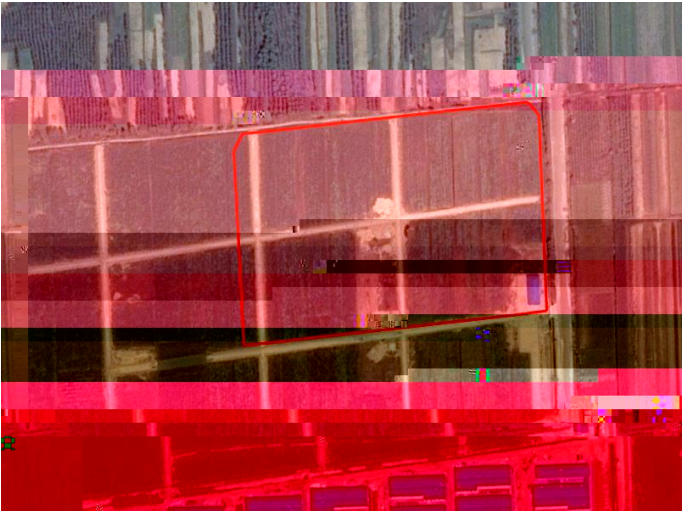

			(m ²)
[2021]36			58655




2-2


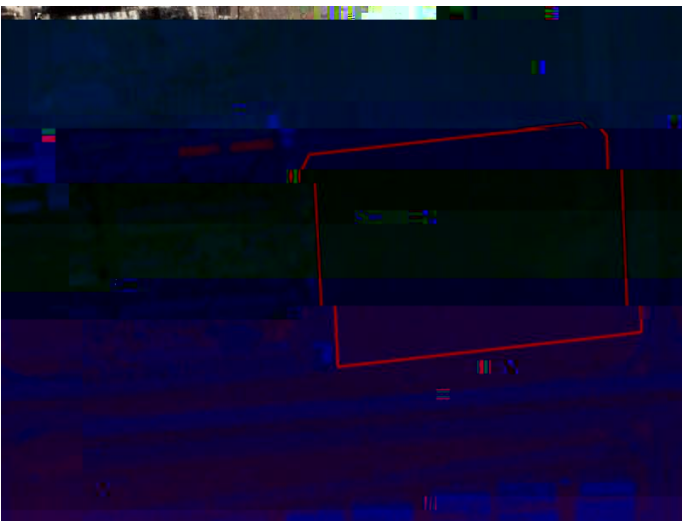
2.5

2.5.1

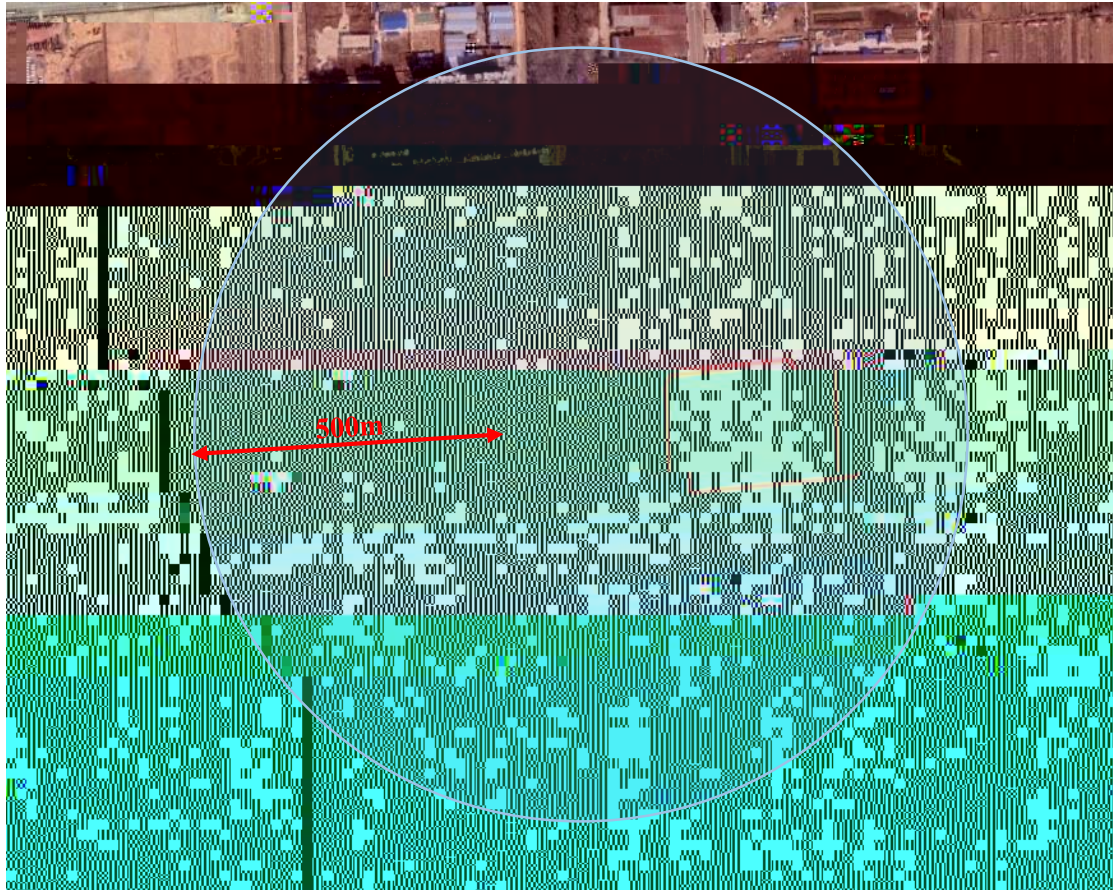
2012

<p>2012.1</p>		
<p>2012.10</p>	<p>200m</p>	
<p>2014.5</p>		

2014.11		
2017.2		
2017.10		

2019.12		
2021.2		

2.5.2



2-5

2.6.2

2012

100m

2017

2021

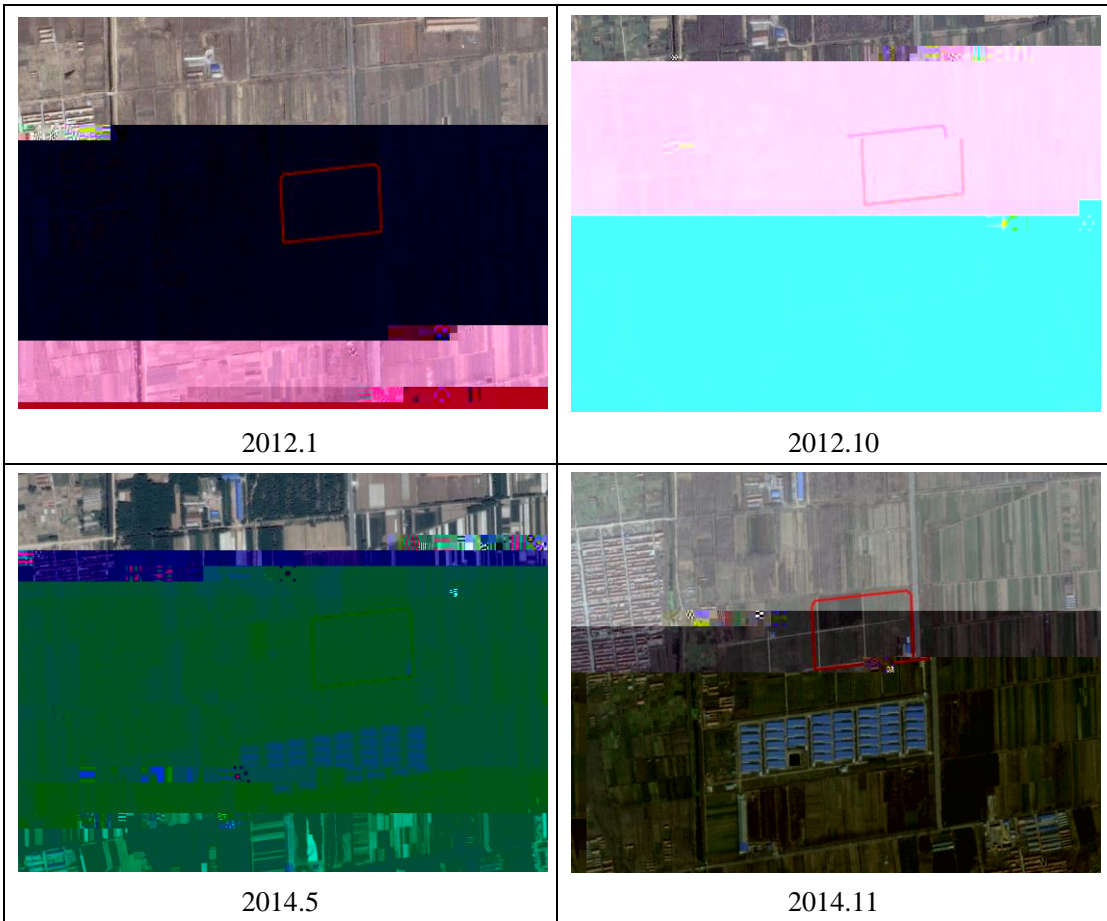
2021

2012 10

2017

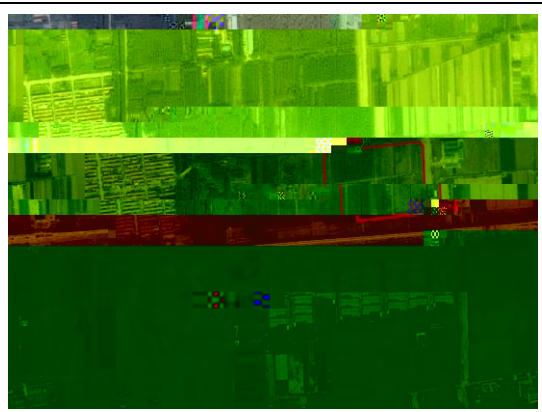
13 2017 10

2-3





2017.2



2017.10



2019.12



2021.2

3

2021 6

3.1

3-1

1			

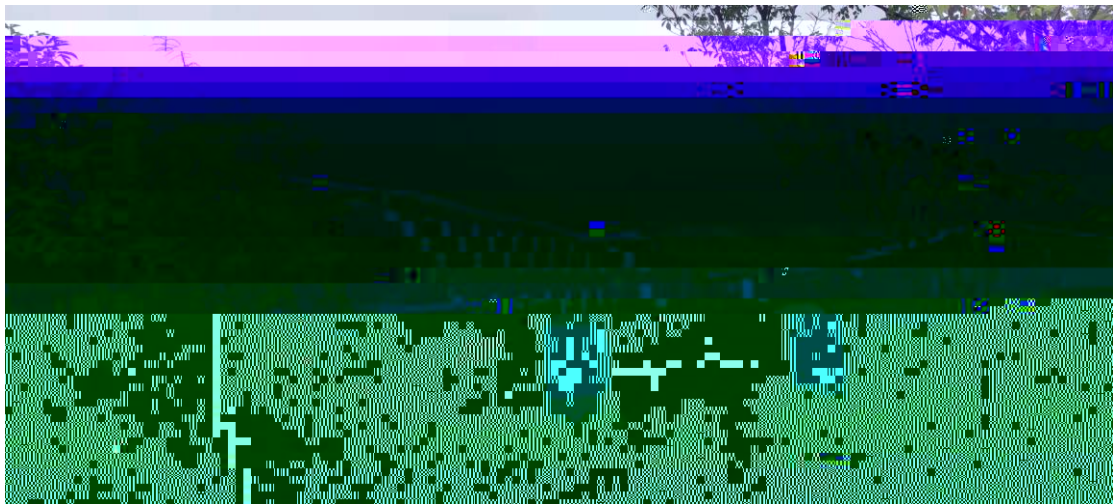


3-4

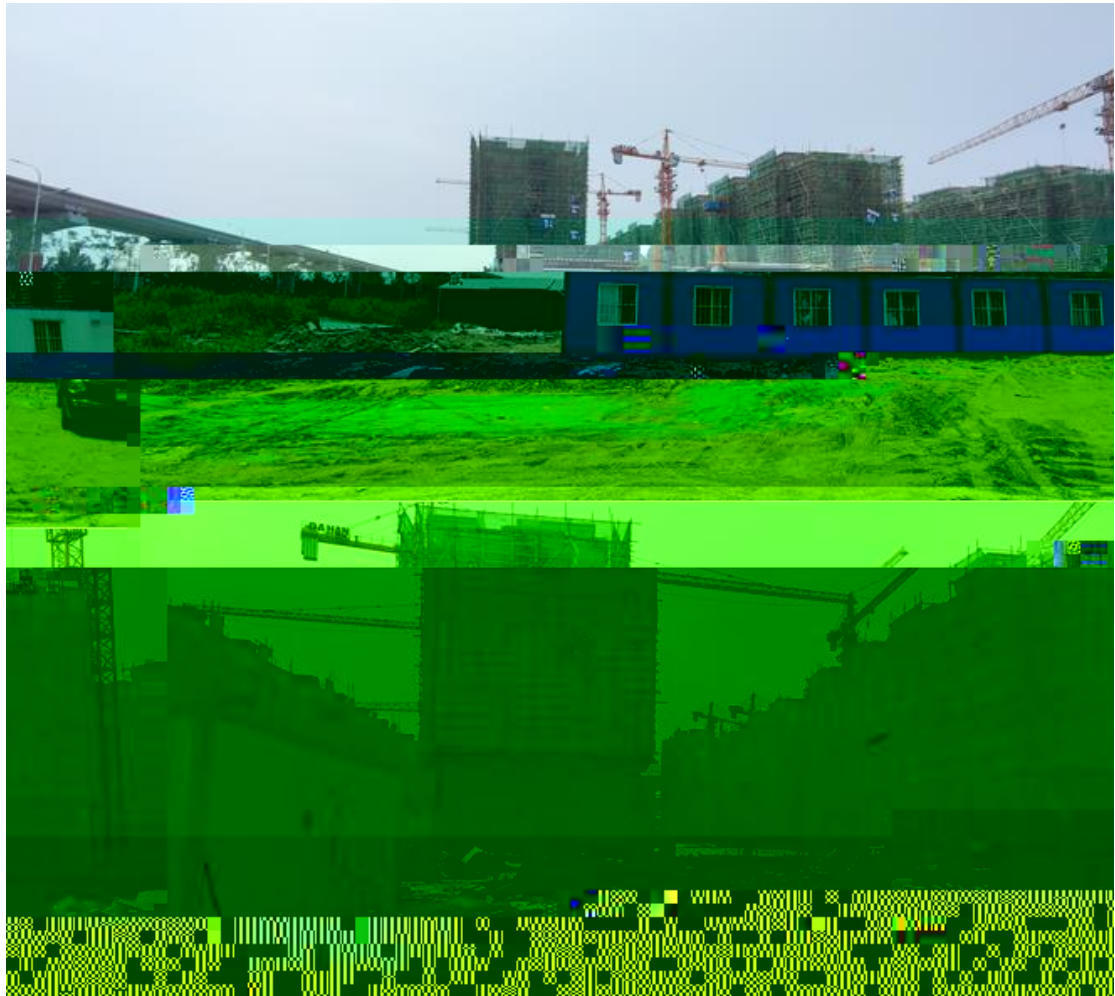
2



3-5



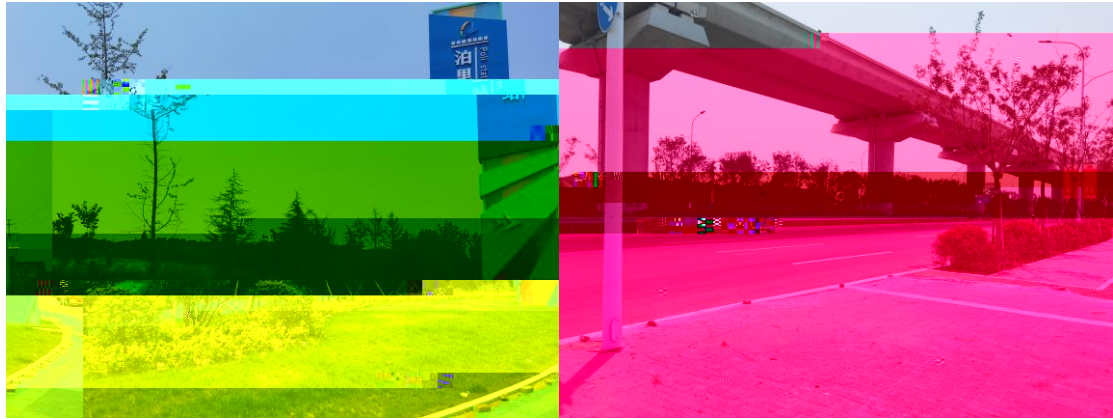
3-6



3-7



3-8



3-9





4

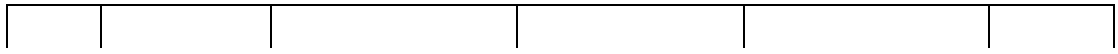
4.1

4.1.1

4.1.2

4.2

4-1



Google

1

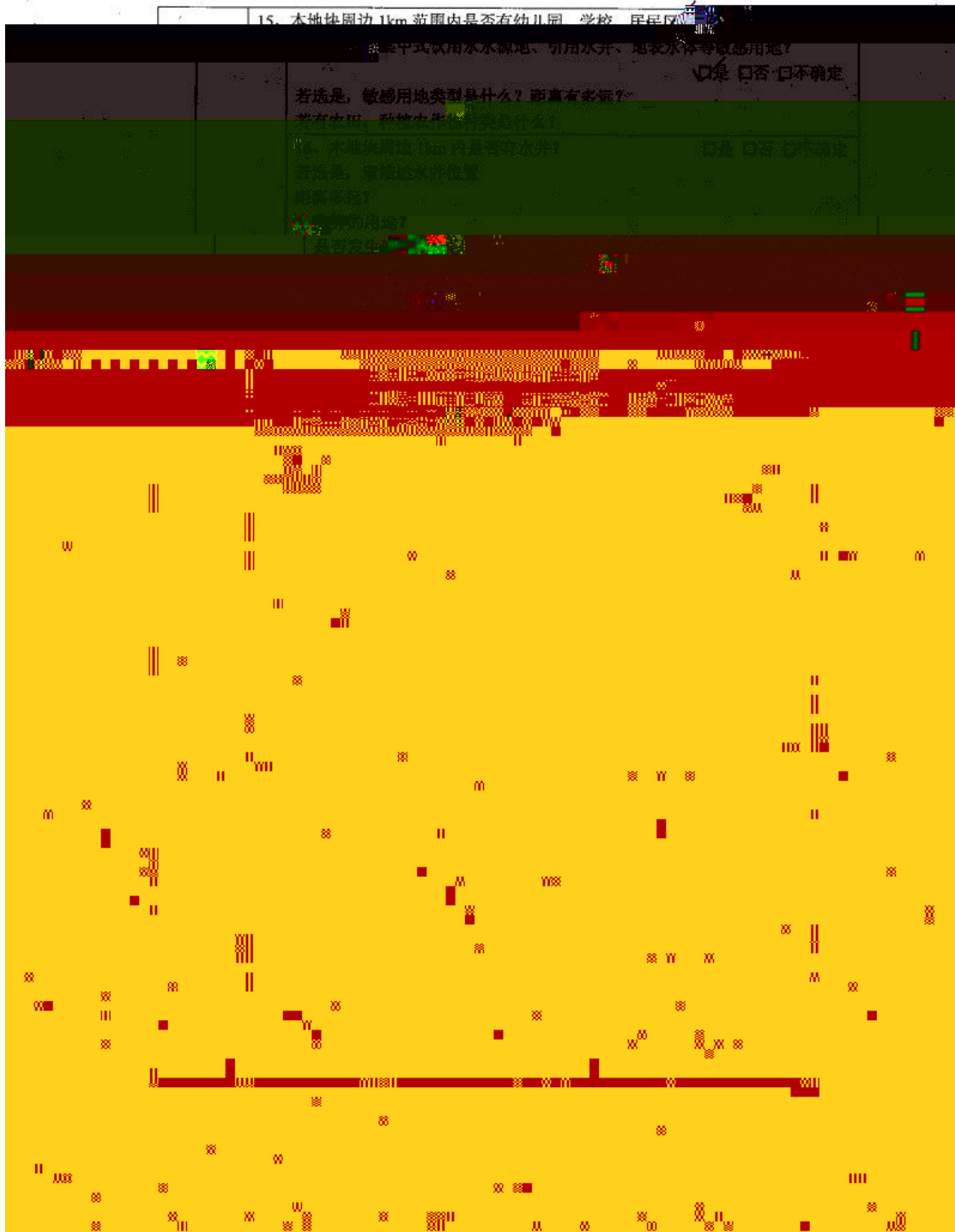
5

5.1

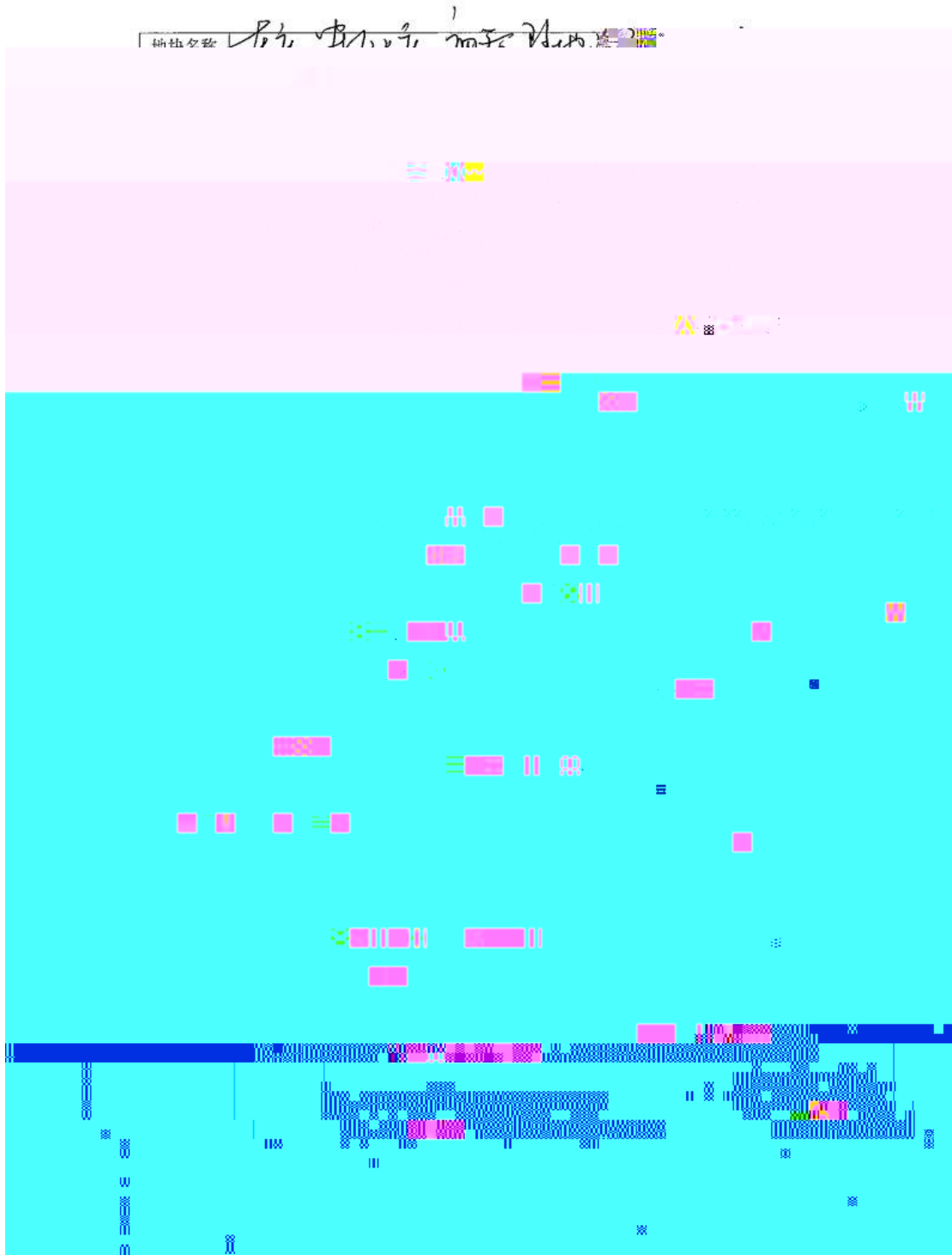
58655m²

5.2

1



4-16



4-1b

15、本地块周边 1km 范围内是否有幼儿园、学校、居民区、医院、自然保护区、农田、集中式饮用水水源地、引用水井、地表水体等敏感用地？ 若选是，敏感用地类型是什么？距离有多远？ 若有农田，种植农作物种类是什么？	<input checked="" type="checkbox"/> 是 <input type="checkbox"/> 否 <input type="checkbox"/> 不确定
16、本地块周边 1km 内是否有水井？ 若选是，请描述水井位置 距离多远？	<input type="checkbox"/> 是 <input type="checkbox"/> 否 <input checked="" type="checkbox"/> 不确定

